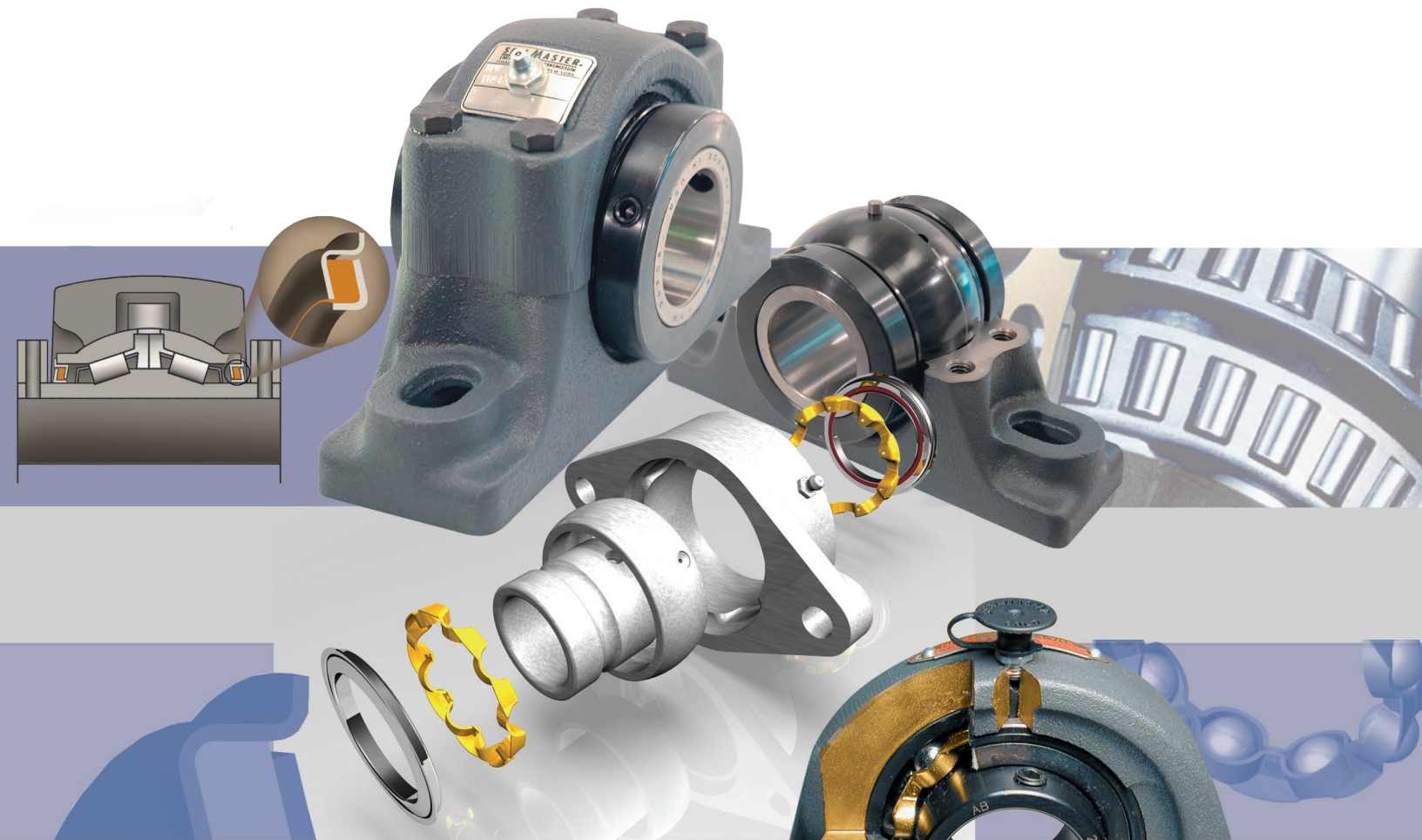




GOLD BALL AND RPB ROLLER BEARINGS

Gold Ball and RPB Roller Bearings



Sealmaster® gold mounted ball bearings and RPB series mounted roller bearings provide a host of unique and patented features that contribute to increased uptime through better sealing performance and improved lubrication.

Sealmaster gold bearings operate as part of a unique system with features that work together to retain grease and help keep out contamination. By engineering the industry's widest race, Regal engineers have laid the groundwork

for the rest of the gold ball bearing features. The wide outer race accommodates a heavy duty labyrinth seal, allowing for the unique land riding ball retainer and room for the dimple and lock pin to stabilize the insert. This maintains a direct line of lubrication flowing into the bearing cavity.

Sealmaster RPB series features rugged split cast-iron housings and cartridge inserts. The inserts are field replaceable, therefore simplifying mounting and

maintaining maximum uptime. The bearing cartridge is designed to compensate for +/- 3 degrees static misalignment. The felt lined seals, mounted between the races, act like a filter, and the rotating flinger helps repel contamination buildup on the seals. While the seals help prevent contaminants from entering the bearing, the positive lubrication system allows direct grease flow into the bearing.

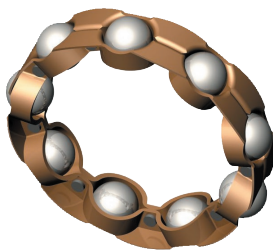
GOLD MOUNTED BALL BEARINGS

Industry's widest outer race

Provides significant surface area to absorb shock loads – also creates large, internal grease chamber to hold extra grease and extend bearing life.

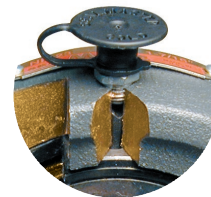


Felt labyrinth seal Includes a protective metal flinger that directs contamination away from sealing surfaces. The felt design provides a tight labyrinth seal that retains grease and acts as a filter to help exclude foreign materials. This design results in less drag and reduced heat compared to rubber contact seals. Alternate seals are available.



Unique land riding metal ball retainer

Minimizes friction and provides maximum grease capacity and circulation. Retainer is designed to "float" on the ground extension (or lands) of the outer ring while spacing the balls precisely for even load distribution. This minimizes wear on both balls and retainer, while maximizing stability, which is especially important in applications involving vibration, shock loading or high operating speeds. Land riding brass retainers for high temperature applications (+200° F) also available.



Exclusive locking pin and dimple system

Prevents outer race rotation, allows a full $\pm 2^\circ$ misalignment

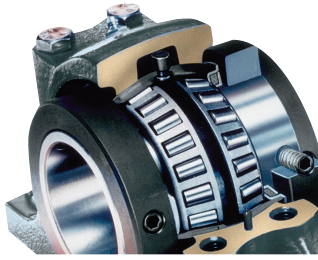
and allows for direct lubrication flow into the bearing chamber. Unique to Sealmaster® gold bearings.

Sealmaster® bearing engineers welcome the opportunity to customize the gold bearing line for your unique application needs. For more information, contact Technical Service at 800-626-2093.

Additional Features:

- Rugged, cast iron housing absorbs shock loads and distributes force
- 52100 high quality bearing steel on inner and outer races resists shock loading and carries high metal fatigue life ratings for increased reliability
- Vacuum degassed steel better withstands subsurface fatigue and subsequent metal fatigue failures
- Black oxide corrosion resistant races are chemically primed for better lubrication retention and corrosion resistance
- Zone hardened inner race provides exceptional control of setscrew holding power – ground and honed raceways provide longer life, quieter operation
- Extra wide inner race for greater surface contact with the shaft for stability and wide load distribution
- Diamond faceted, precision ground setscrews at 120° provide superior shaft holding power with less race distortion
- Permanent metal nameplate with unit number and shaft size for easy identification

RPB SERIES MOUNTED ROLLER BEARINGS

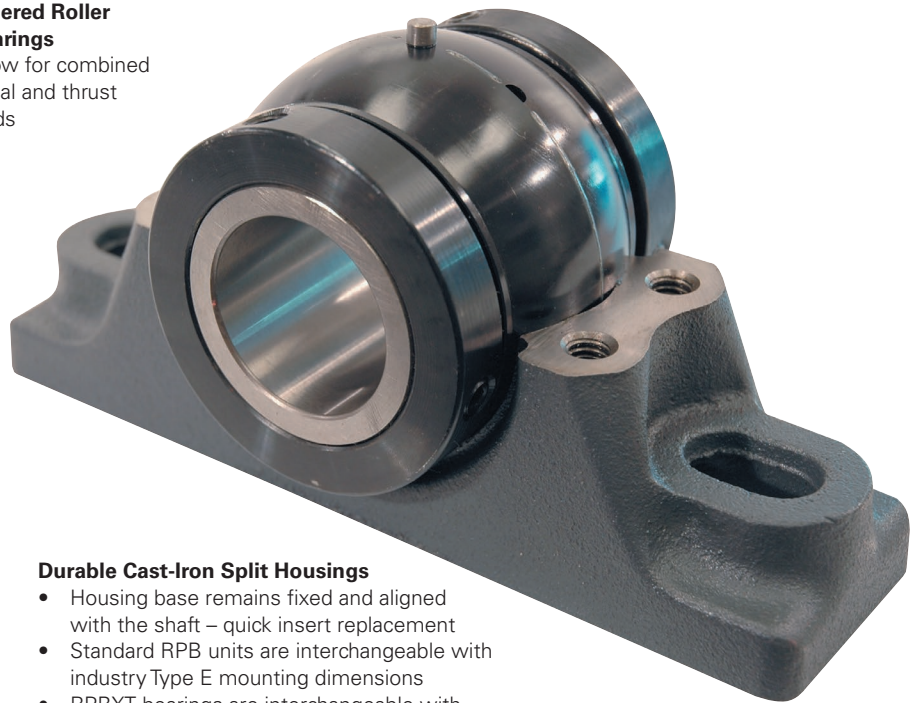


Heavy-Duty Tapered Roller Bearings

Allow for combined radial and thrust loads

One-Piece, Self-Aligning Cartridge

- Self-aligning insert compensates for up to $\pm 3^\circ$ of static misalignment
- Innovative design helps maintain proper rolling element contact with the races when misaligned



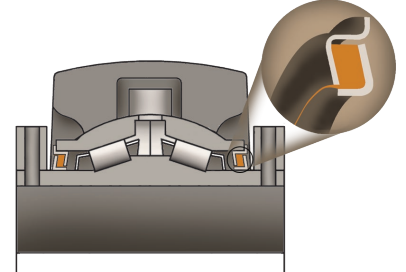
Durable Cast-Iron Split Housings

- Housing base remains fixed and aligned with the shaft – quick insert replacement
- Standard RPB units are interchangeable with industry Type E mounting dimensions
- RPBXT bearings are interchangeable with SAF style four-bolt pillow block and are shaft ready for easier and faster installation



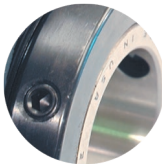
Direct Lubrication System

helps prevent seal damage by venting pressure from over greasing. Bearing grease flow has a shorter path than competitive spherical roller bearing units



Patented Felt Lined Flinger Seal

- Filters out contaminants in dry, dusty, dirty conditions
- Mounted between the races – not subject to misalignment distortion
- Contact seal available for wet, moist conditions

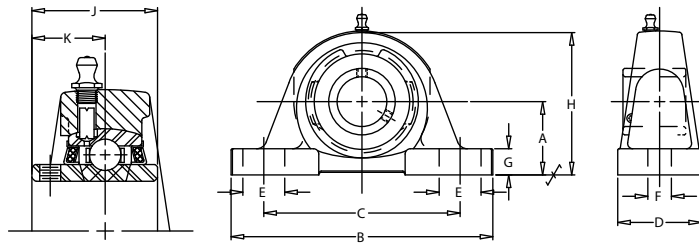


Additional Features:

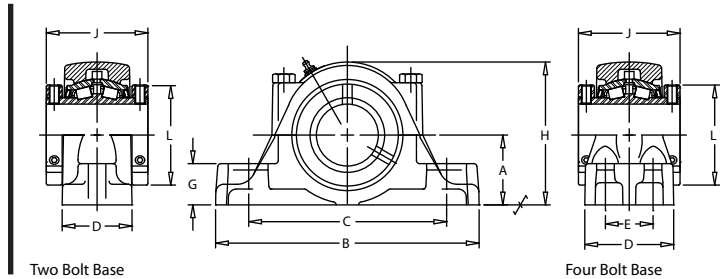
- Alignment pin helps prevent outer race rotation – a common problem in vibratory applications
- Select from two- and four-bolt pillow blocks in bore sizes from $1 \frac{3}{16}''$ to $5''$; flange units from $1 \frac{3}{16}''$ to $4 \frac{1}{2}''$ and piloted flanges from $1 \frac{3}{16}''$ to $5''$
- Replaceable cartridge inserts from $1 \frac{3}{16}''$ to $5''$
- Exclusive diamond faceted setscrews contribute to improved clamping and resistance to back out

Shaft Dia. in.	Part Description	Dimensions in inches												Interchange	
				C		D	E	F	G	H	J	K	Bolt Size (in)	Dodge®*	
				MIN.	MAX.										
1 7/16	MP-23	2 1/8	8	5	6 3/8	2 1/4	1 3/16	9/16	3/4	4 3/16	1 15/16	1 3/16	1/2	P2B-SCM-107	
1 15/16	MP-31	2 1/2	9 1/2	5 15/16	7 9/16	2 7/8	1 7/16	11/16	7/8	5 3/32	2 3/16	1 5/16	5/8	PSB-SCM-115	
2 3/16	MP-35	2 3/4	10 1/4	6 9/16	7 15/16	3 1/8	1 7/16	13/16	1 1/16	5 5/8	2 9/16	1 9/16	3/4	P2B-SCM-203	
2 7/16	MP-39	3	11 1/4	7 1/8	8 7/8	3 1/4	1 5/8	13/16	1 1/16	6 1/4	2 3/4	1 11/16	3/4	P2B-SCM-207	
2 15/16	MP-47	3 1/2	13	7 7/8	10 1/8	3 1/2	2	15/16	1 1/4	7 1/4	3 1/4	1 15/16	7/8	P2B-SCM-215	
3 7/16	MP-55	4	15	9 5/8	12 5/8	4 3/8	2 3/8	15/16	1 5/16	8 1/4	3 25/32	2 7/32	7/8	P2B-SCM-307	
3 15/16	MP-63	5	17	11 3/4	14 3/4	4 3/4	2 1/2	1 1/8	1 5/16	10	4 5/8	2 11/16	1	P2B-SCM-315	

Gold Mounted Ball Bearing



RPB Bearing



Shaft Dia. (in)	Part Description	Dimensions in inches										Bolt Base		Interchange		
		A	B	C		D	E	G	H	J	L	NO.	SIZE	Dodge®*	Rexnord®*	Link-Belt®*
				MAX.	MIN.											
Two Bolt Base																
1 3/16	RPB-103-2	1.50	6.25	4.56	4.94	1.88	*	.88	3.12	2.75	2.25	2	1/2	P2B-E-103R	ZEP-2103	----
1 7/16	RPB-107-2	1.88	7.25	5.31	5.94	2.06	*	1.12	3.81	3.00	2.62	2	1/2	P2B-E-107R	ZEP-2107	EP-B22423H
1 1/2	RPB-108-2	2.12	7.75	5.56	6.44	2.31	*	1.25	4.38	3.38	2.88	2	1/2	P2B-E-108R	ZEP-2108	EP-B224B24H
1 11/16	RPB-111-2	2.12	7.75	5.56	6.44	2.31	*	1.25	4.38	3.38	2.88	2	1/2	P2B-E-111R	ZEP-2111	EP-B22427H
1 3/4	RPB-112-2	2.25	8.88	6.31	7.19	2.44	*	1.25	4.62	3.50	3.25	2	5/8	P2B-E-112R	ZEP-2112	EP-B224B28H
1 15/16	RPB-115-2	2.25	8.88	6.31	7.19	2.44	*	1.25	4.62	3.50	3.25	2	5/8	P2B-E-115R	ZEP-2115	EP-B22431H
2	RPB-200-2	2.25	8.88	6.31	7.19	2.44	*	1.25	4.62	3.50	3.25	2	5/8	P2B-E-200R	ZEP-2200	EP-B22432H
2 3/16	RPB-203-2	2.50	9.62	6.69	7.94	2.56	*	1.44	5.12	3.75	3.62	2	5/8	P2B-E-203R	ZEP-2203	EP-B22435H
2 7/16	RPB-207-2	2.75	10.38	6.94	8.69	2.75	*	1.62	5.62	4.00	3.94	2	5/8	P2B-E-207R	ZEP-2207	EP-B22439H
2 1/2	RPB-208-2	2.75	10.38	6.94	8.69	2.75	*	1.62	5.62	4.00	3.94	2	5/8	P2B-E-208R	ZEP-2208	EP-B22440H
2 3/4	RPB-212-2	3.12	11.75	8.06	9.69	3.00	*	1.75	6.38	4.50	4.71	2	3/4	P2B-E-212R	ZEP-2212	EP-B22444H
2 15/16	RPB-215-2	3.12	11.75	8.06	9.69	3.00	*	1.75	6.38	4.50	4.71	2	3/4	P2B-E-215R	ZEP-2215	EP-B22447H
3	RPB-300-2	3.12	11.75	8.06	9.69	3.00	*	1.75	6.38	4.50	4.71	2	3/4	P2B-E-300R	ZEP-2300	EP-B22448H
3 7/16	RPB-307-2	3.75	13.75	10.12	11.25	4.12	*	2.06	7.75	5.00	5.43	2	7/8	P2B-E-307R	ZEP-2307	EP-B22455H
3 1/2	RPB-308-2	3.75	13.75	10.12	11.25	4.12	*	2.06	7.75	5.00	5.43	2	7/8	P2B-E-308R	ZEP-2308	EP-B22456H
Four Bolt Base																
2 7/16	RPB-207-4	2.75	10.38	7.75	8.75	3.50	1.88	1.62	5.62	4.00	3.94	4	5/8	P4B-E-207R	ZEP-2207-F	EP-B22439FH
2 1/2	RPB-208-4	2.75	10.38	7.75	8.75	3.50	1.88	1.62	5.62	4.00	3.94	4	5/8	P4B-E-208R	ZEP-2208-F	EP-B22440FH
2 3/4	RPB-212-4	3.12	11.75	8.75	10.00	3.75	2.12	1.75	6.38	4.50	4.71	4	5/8	P4B-E-212R	ZEP-2212-F	EP-B22444FH
2 15/16	RPB-215-4	3.12	11.75	8.75	10.00	3.75	2.12	1.75	6.38	4.50	4.71	4	5/8	P4B-E-215R	ZEP-2215-F	EP-B22447FH
3	RPB-300-4	3.12	11.75	8.75	10.00	3.75	2.12	1.75	6.38	4.50	4.71	4	5/8	P4B-E-300R	ZEP2300-F	EP-B22448FH
3 7/16	RPB-307-4	3.75	13.75	10.56	11.50	4.50	2.38	2.06	7.75	5.00	5.43	4	5/8	P4B-E-307R	ZEP-2307-F	EP-B22455FH
3 1/2	RPB-308-4	3.75	13.75	10.56	11.50	4.50	2.38	2.06	7.75	5.00	5.43	4	5/8	P4B-E-308R	ZEP2308-F	EP-B22456FH
3 15/16	RPB-315-4	4.25	15.25	11.00	13.00	4.50	2.25	2.44	8.62	6.25	5.93	4	3/4	P4B-E-315R	ZEP-2315-F	EP-B22463FH
4	RPB-400-4	4.25	15.25	11.00	13.00	4.50	2.25	2.44	8.62	6.25	5.93	4	3/4	P4B-E-400R	ZEP-2400-F	EP-B22464FH
4 7/16	RPB-407-4	4.75	16.50	11.75	13.88	4.62	2.50	2.75	9.62	6.75	6.50	4	3/4	P4B-E-407R	ZEP-2407-F	EP-B22471FH
4 1/2	RPB-408-4	4.75	16.50	11.75	13.88	4.62	2.50	2.75	9.62	6.75	6.50	4	3/4	P4B-E-408R	ZEP-2408-F	EP-B22472FH
4 15/16	RPB-415-4	5.50	18.50	13.50	15.88	5.12	2.75	3.12	11.00	7.25	7.31	4	7/8	P4B-E-415R	ZEP-2415-F	EP-B22479FH
5	RPB-500-4	5.50	18.50	13.50	15.88	5.12	2.75	3.12	11.00	7.25	7.31	4	7/8	P4B-E-500R	ZEP-2500-F	EP-B33480FH

*The following are believed to be the trademarks or trade names of the indicated owners and are not owned or controlled by Regal Beloit Corporation. Link-Belt: Link-Belt Cranes L.P.; Dodge: ABB Asea Brown Boveri Ltd.; and Rexnord: Rexnord Industries, LLC.



Regal Beloit America, Inc.

7120 New Buffington Road
Florence, KY 41042

Customer Service: 800-626-2120

Fax: 800-262-3292

Technical Service: 800-626-2093

www.regalbeloit.com

APPLICATION CONSIDERATIONS

The proper selection and application of power transmission products and components, including the related area of product safety, is the responsibility of the customer. Operating and performance requirements and potential associated issues will vary appreciably depending upon the use and application of such products and components. The scope of the technical and application information included in this publication is necessarily limited. Unusual operating environments and conditions, lubrication requirements, loading supports, and other factors can materially affect the application and operating results of the products and components and the customer should carefully review its requirements. Any technical advice or review furnished by Regal Beloit America, Inc. and/or its affiliates ("Regal") with respect to the use of products and components is given in good faith and without charge, and Regal assumes no obligation or liability for the advice given, or results obtained, all such advice and review being given and accepted at customer's risk.

For a copy of our Standard Terms and Conditions of Sale, please visit <http://www.regalbeloit.com> (please see link at bottom of page to "Standard Terms and Conditions of Sale"). These terms and conditions of sale, disclaimers and limitations of liability apply to any person who may buy, acquire or use a Regal product referred to herein, including any person who buys from a licensed distributor of these branded products.

Regal and Sealmaster are trademarks of Regal Beloit Corporation or one of its affiliated companies.

©2015, 2018 Regal Beloit Corporation, All Rights Reserved. MCB18032E • Form# 9092E



Altoona, PA

Phone: 814.946.5428
Toll Free: 800.947.5428
Email: altoona@erietecinc.com

Erie, PA

Phone: 814.453.6871
Toll Free: 800.777.6871
Email: erie@erietecinc.com

Indiana, PA

Phone: 724.465.6181
Toll Free: 800.627.7557
Email: indiana@erietecinc.com

Meadville, PA

Phone: 814.724.7717
Toll Free: 800.568.7717
Email: meadville@erietecinc.com

Pittsburgh, PA

Phone: 412.788.1520
Toll Free: 800.289.3743
Email: pittsburgh@erietecinc.com

St Marys, PA

Phone: 814.834.7402
Toll Free: 800.678.7402
Email: stmarys@erietecinc.com

REGAL®