



from Erie Bearings Co.



Custom Control Panels



EB Controls™ is a UL508A industrial control panel shop and a division of ErieTec, Inc. The EB Controls™ division was born out of our customer's desire for turnkey solutions to some of their toughest electrical control systems. These same customers have come to rely on us as a reliable manufacturing partner.



Above: Scot Shepard EB Controls supervisor shown testing out PLC logic as part of the thorough 15 point quality inspection process.

“Our **consultative** approach allows us to offer control solutions even when you're not exactly sure what you need.

That's where we shine. Our team can comprehensively address your specific needs and propose and design a control panel just for your particular application. We'll even program the HMI and PLC.”

Whether you're an OEM in need of high volume, repetitive control panels or looking for a custom design and build of a “one-off” panel, EB Controls™ can create a production schedule to meet your deadline.

As a fully authorized distributor of some of the leading electrical lines, we can also offer cost savings opportunities that can keep your project on budget—our competitive advantage becomes *your* competitive advantage!



FERRAZ SHAWMUT IS NOW MERSEN



Each EB Controls™ Panel Includes:

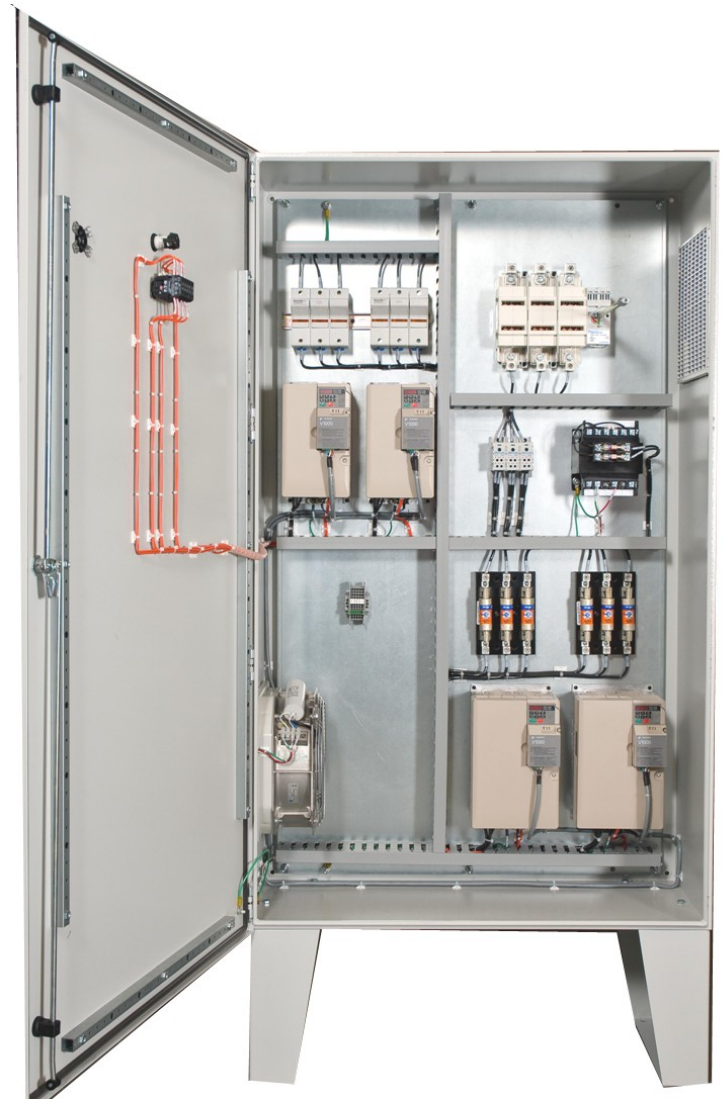
- *Cost Savings Reduction Proposals*
- *CAD drawings*
- *All wires labeled for easy reference/trouble shooting*
- *Wire way—for neat appearance*
- *Color coded wiring indicating different voltage levels*
- *Internal labeling of all components and terminal blocks*
- *Logical terminal block groupings*
- *Wire bundling and neatness in wire routing throughout panel*
- *Abrasion protection of wiring routed over door*

As a UL508A Control Panel Shop you can rest assured that EB Controls™ standards and practices adhere to the third party standards of UL.



UL 508A: the most widely accepted standard for control panels in North America.

The UL Listing mark on an industrial control panel (ICP) provides evidence to satisfy the increasing number of inspection authorities requiring third-party safety certification and your customers demanding the same. The UL Listing mark may be applied to a wide variety of designs, ranging from one-of-a-kind panels to standardized designs with only minor variations.



HAMMOND
MANUFACTURING™



Each EB Controls™
Panel is proudly
manufactured in the

Contact your local Erie Bearings Company office for more information

Custom Control Panels—Your Design—Our Design—UL508A Control Panels—Temperature Control Panels—PLC Programmed—VFD Controls—Pump Panels—Instrumentation Panels—HMI Design—Motor Control Centers (MCC's)- 4X Washdown Panels—Soft Start Panels—In-House AutoCAD—Pendant Stations—Duplex Pump Panels—Back Plate Special Assemblies—Machinery Control Upgrades—Quick Deliver—Custom Control Panels—Your Design—Our Design—UL508A Control Panels—Temperature Control Panels—PLC Programmed—VFD Controls—Pump Panels—Instrumentation Panels—HMI Design—Motor Control Centers (MCC's)- 4X Washdown Panels—Soft Start Panels—In-House AutoCAD—Pendant Stations—Alarm Panels—Back Plate Special Assemblies—Machinery Control Upgrades—Quick Delivery—Simplex Panels—Duplex Panels—Data Logging Controls—Protocol Conversion—Simplex Panels—Duplex Panels—Data Logging Controls—Protocol Conversion—Custom Control Panels—Your Design—Our Design—UL508A Control Panels—Temperature Control Panels—PLC Programmed—VFD Controls—Pump Panels—Instrumentation Panels—HMI Design—Motor Control Centers (MCC's)

Erie, PA

1432 East 12th Street, 16503

Phone: 814.453.6871

Toll Free: 800.777.6871

Pittsburgh, PA

514 Parkway View Drive 15205

Phone: 412.788.1520

Toll Free: 800.289.3743

Indiana, PA

620 Kolter Drive, 15701

Phone: 724.465.6181

Toll Free: 800.627.7557

Altoona, PA

3127 Fairway Drive, 16602

Phone: 814.946.5428

Toll Free: 800.947.5428

Meadville, PA

959 Bessemer Street, 16335

Phone: 814.724.7717

Toll Free: 800.568.7717

St. Marys, PA

768 Washington Street, 15857-3604

Phone: 814.834.7402

Toll Free: 800.678.7402



from Erie Bearings Co.